

East Riding Children and Young People's Strategic Plan 2013 - 2016



FOREWORD

Our Children and Young People's Strategic Plan is part of the overall ambition for the area contained in the East Riding Community Plan and should be seen as part of this wider strategic planning, which is overseen by the East Riding Local Strategic Partnership. The Community Plan, developed in 2006 and most recently refreshed in 2013, provides a blueprint for the area for the ten year period to 2016. The overarching aim is to sustain and create thriving, vibrant and sustainable communities in which everyone can enjoy a high quality of life. Our shared ambitions for the East Riding are for an area where:-

- **Children and young people have a brighter future**
- **Older people enjoy a healthy independent life**
- **Communities are thriving, prosperous and safe**
- **Regeneration transforms deprived areas and reduces health and other inequalities**
- **We value and care for the diverse character of the area**

The Government expects all key local authority services to play their part in improving the lives of children and young people. Regulations have changed, resulting in local autonomy around how our Children's Trust is structured and operated. Additionally, there is also no duty for local authorities to publish a Children and Young People's Strategic Plan. In the East Riding, however, the Children's Trust strongly believe that the publication of a Children and Young People's Strategic Plan is vital: the Plan provides a framework for improvement, a basis for partner cooperation and ensures that the Council and its partners are accountable for delivering our long term ambition for children and young people. This Plan builds upon the successes of the 2009-12 Plan, much of which remains relevant today, including the shared ambition.

The Children and Young People's Strategic Plan is the single overarching plan for all services which directly affect children and young people and focuses particularly on those challenges and priorities that have been identified. The Plan also sets out an integrated approach that will enable us to work together in partnership in order to prioritise, co-ordinate and focus everyone's contribution towards enabling all young people to achieve their full potential. This is not a detailed delivery plan, but it will be underpinned by Council and partner plans operating at different levels to accomplish specific goals.

We would very much welcome feedback on this plan – please contact Kevin Hall, Director of Children, Families and Schools at kevin.hall@eastriding.gov.uk



INTRODUCTION

I am pleased to introduce, on behalf of the East Riding Children's Trust, the East Riding Children and Young People's Plan for 2013 – 2016. The Plan outlines our overarching ambition and priorities for children and young people in the area, an ambition that is centred on the feedback which we received from extensive engagement and consultation with children and young people in the development of the Plan. The voice of all our young children and young people runs through this Plan and their ambitions are woven into our ten priorities.

As Cabinet Member for Children, Young People and Education, I am proud to be a member of the Children's Trust Board. The East Riding delivers outstanding outcomes for all children and young people and this Plan provides a platform for us to continue that work. We have a duty to act as a good parent to children and young people in our care and those in the process of leaving care. We want these children to have the outcomes that every effective parent would want for their own children.

Effective partnership working and collaboration are central to our success. Elected Members and senior officers share a common vision for how we deliver and improve outcomes. This approach is shared by the Council's key strategic partners including Humberside Police, East Riding Clinical Commissioning Group, Humber NHS Foundation Trust, all schools and academies and the voluntary sector.

This Plan comes at a time of continuing challenge. Whilst the economy is starting to show the first signs of recovery, all partners are faced with delivering more with less funding. Our families also face personal challenges including increases in the cost of living, insecurities in employment and changes to welfare arrangements. These challenges and the possible impact on children and young people are a great concern to myself and my fellow councillors.

Whilst we recognise that these challenges will continue, our role, through the Local Strategic Partnership, is to ensure that we work together effectively, deliver outstanding services, drive efficiencies and provide the best support to our vulnerable children and young people. This Plan is the cornerstone of our strategic approach to supporting our families and making the East Riding a place where children and young people are happy, healthy, confident and safe and where they will reach their full potential in readiness for a fulfilling and responsible adulthood.

Cllr. Julie Abraham
Cabinet Member for Children, Young People and Education,
East Riding of Yorkshire Council

WHAT IT IS LIKE LIVING IN THE EAST RIDING OF YORKSHIRE

The East Riding is considered to be a good place to live and work. The population has been growing steadily over recent years and whilst 90% of the area is classified as rural and is sparsely populated, there are also some major urban areas including Beverley, Bridlington, Goole and on the periphery of the City of Hull. Some areas of the East Riding fall into the highest quartile for deprivation in England; particularly in Bridlington and Goole where some wards rank as amongst the most deprived in the country. Our deprived areas feature low income, high unemployment, poor health and low educational attainment, and these issues have been exacerbated by the economic downturn, increases to the cost of living, welfare reform and reduced public sector budget settlements.

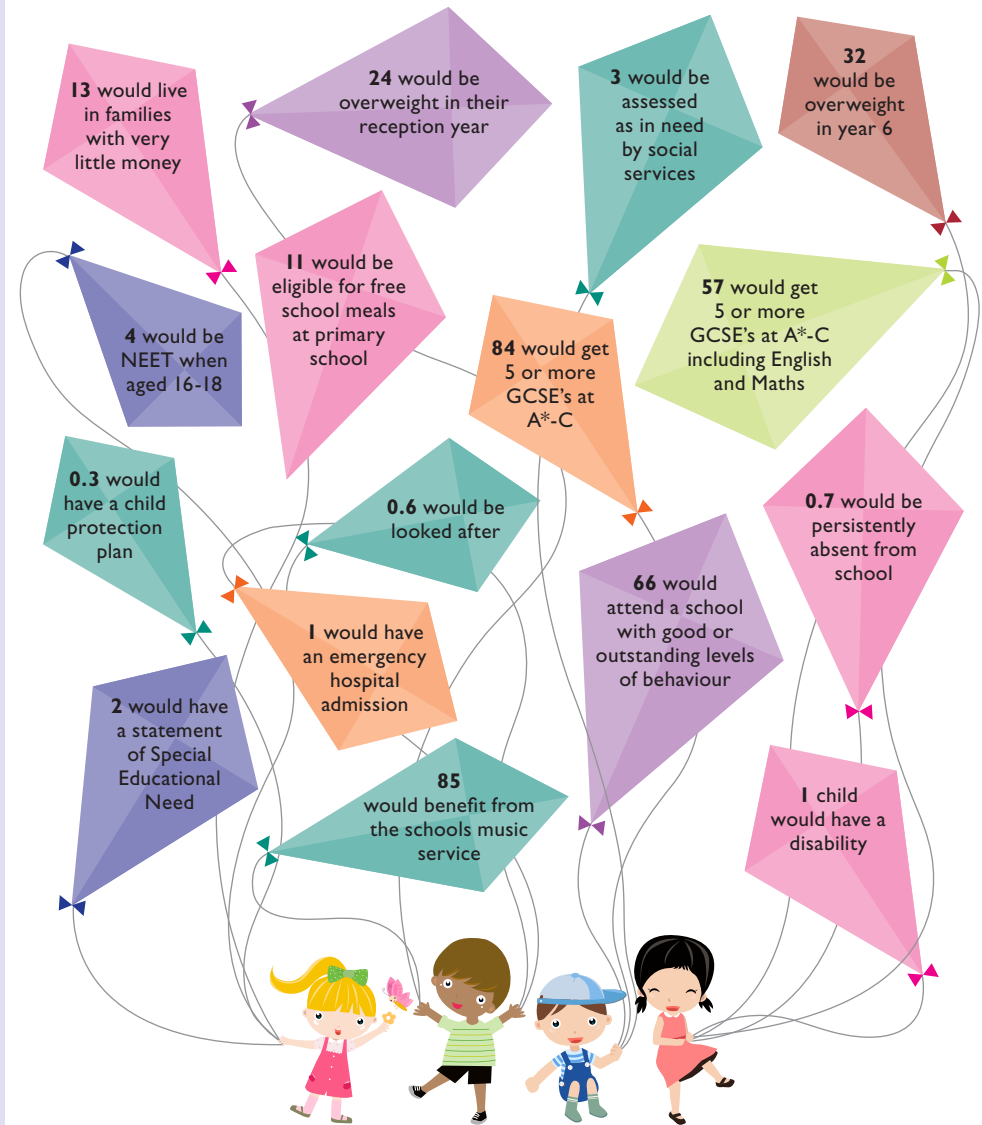
The geography of the East Riding means that our children and young people are not a homogenous group. Our families live in towns which range from the affluent, accessible and cosmopolitan to deprived, remote and insular, where affluence and deprivation often sit alongside each other.

Whilst our universal services meet the needs of all children and young people, there is a need to target more expensive intensive resources in some areas to tackle long term, generational, social and economic, and wellbeing issues. However, this is becoming more fiscally challenging, as publicly funded organisations are shrinking and have less capacity to act.

The needs of children and young people in an area like this present a significant challenge for all of the agencies involved in supporting children, young people and their families. Some young people tell us that they like living in the East Riding because of the beautiful countryside and the access to the coast. However, there remain some significant issues that present a challenge to us and these include the number of children that live in families that are income deprived and those that are eligible for free school meals.

In addition to the Council, the area is served by East Riding of Yorkshire and Vale of York Clinical Commissioning Groups (CCGs), Humberside Police and the Police & Crime Commissioner, Humber NHS Foundation Trust, Humberside Fire and Rescue Service, Humberside Probation Trust and a rich network of voluntary groups. These organisations form the basis of our Children's Trust which is chaired by the Director of Children, Families and Schools, East Riding of Yorkshire Council.

If only 100 children and young people lived in the East Riding, then, as they grew up:



OUR AMBITION - CHILDREN AND YOUNG PEOPLE HAVE A BRIGHTER FUTURE

We know that strong families and individual success contribute to the development of vibrant and sustainable communities. How we shape and deliver our services is crucial in helping us build a community that is welcoming and actively promotes the happiness and success of each individual. We are passionate about delivering measurable improvement for children and young people in the East Riding and taking action to narrow the gap between the performance of vulnerable groups and the mainstream. We are also committed to reducing inequalities and have high aspirations. We have tried to capture this in our Vision Statement:

We want all young people in the East Riding of Yorkshire to be happy, healthy, confident and safe. We want the very best for each and every young person and will work in partnership to remove barriers to achievement and narrow the gap so that everyone can reach their potential. We will harness the talent and enthusiasm of young people to ensure that all our services meet their needs.

Our Core Themes

Our vision and priorities are shaped by our understanding of local needs and by national priorities. At the heart of our vision, lie six core themes:

- Integration
- Early help/prevention
- Educational outcomes/maximising potential
- Health and wellbeing
- Staying safe
- Supporting the most vulnerable

I. Integration

Children's services have been unified as a service for two years. We have brought together Early Years, Youth and Family Support together with Children's Social Care. Our early intervention and prevention work, together with statutory work, now benefits from one leadership team with a shared vision and priorities.

We aim to ensure that all staff across the service use an approach with shared principles, shared language and agreed outcomes. We also focus on supporting families to recognise their strengths and difficulties and when and why protection of their children may be necessary. For our work to be successful, working openly with families will give them the security and confidence they need to be part of the solutions to the presenting issues, helping them to develop their own resources and skills to deal with situations at an early stage should they arise in the future.

The East Riding Children's Trust Board has made a strong commitment to the commissioning process to improve outcomes for children and young people. The East Riding Children's Trust has developed a common approach to commissioning which leads to more effective practice and also generates more efficient processes. As a result, partners have now agreed to the cyclical commissioning model outlined below.

Using this model ensures commissioning is planned and coordinated across the whole spectrum of a child's needs. The underpinning principles of our approach to commissioning, together with active engagement with children, young people and families ensure that all decisions are based on:

- Improving outcomes for children, young people and their families
- Thorough research, data interrogation and evaluation of evidence
- An understanding of local needs and views of children and young people and their families
- A removal of barriers to achieve equality of access and opportunity.
- Evidence of a favourable impact on outcomes and value for money.



2. Early Help/Prevention

All members of the East Riding Children's Trust Board are committed to using our resources to ensure we provide effective support as early as possible where needs do arise, or are likely to arise. This commitment is set out in our **Early Intervention Strategy 2013**.

Where individuals and families face complex and difficult challenges, we will work with them and ensure that all our services work closely together to respond in a co-ordinated and effective manner. We are putting in place a fully integrated service supporting children and young people and their families and carers, to provide high quality targeted services in our local communities.

It is important to ensure that there is a permeable boundary between different levels of support. Universal services aim to promote positive outcomes and are available to all. Preventative work and early interventions will be targeted where children, young people or families are very likely to have unsatisfactory outcomes if we do not intervene early to change their trajectory.

We will narrow the gap in terms of health and attainment inequalities for children and young people so that all children and young people will have the opportunity to reach their full potential and enjoy happy and fulfilling lives.

We have made huge strides on our timeliness of adoption by improved pre-birth assessments, using the skills and resources of social workers and Children's Centre expertise. We continue to build upon the 'Good' with Outstanding features inspection outcomes for our Adoption and Fostering services.

3. Educational Outcomes & Maximising Potential

The Council's new strategy 'Improving Schools - Improving Lives', exemplifies our ambition for excellence in terms of education provision and our aspirations for young people.

The strategy sets out the shared responsibility for school improvement between the Council, its maintained schools, academies and our other key partners. To support the ambition set out in the strategy, we aim to ensure that all schools achieve a 'Good' or 'Better' judgement by 2016 for schools currently judged as satisfactory or within three years for schools subsequently judged as required to improve to become good. To support this ambition, the Council has allocated £1.75 million with which we aim to provide supportive challenge to our partners, to enable them to succeed, celebrate their success and share the very best practice amongst all educational settings.

4. Health & Wellbeing

The East Riding Health and Wellbeing Board, based on the local evidence summarised in the Joint Strategic Needs Assessment, has agreed three long-term priority outcomes for health, care and wellbeing in the East Riding:

- **East Riding residents achieve healthy, independent ageing**
- **Health and wellbeing inequalities in the East Riding are reduced**
- **Children and young people in the East Riding enjoy good health and wellbeing**

These outcomes have been agreed after careful consideration of the key challenges in the area and national health and care priorities. The Health and Wellbeing Board will use this strategy to inform the use of its limited resources for the commissioning of health and care services locally. In terms of the priority for children and young people, a range of significant health issues have been identified,

requiring a partnership approach to intervention; these will be addressed through preventative services, support and intervention services and sustainability.

5. Staying Safe

In September 2013, the East Riding Safeguarding Children's Board (ERSCB) set out a number of new challenges for the Children's Trust Board in order to ensure that safeguarding is central to the context in which the Children's Trust Board operates. These are:

- To listen and respond to the voice of young people, the Children's Trust Board should develop a strategy for engagement of children and young people in service improvement and to be able to evidence the impact of this strategy
- To ensure support is timely and proportionate to the needs of children and families, the Children's Trust should:
 - Ensure that the early help offer is articulated across all partner agencies, particularly the role of Early Year's and Youth and Family Support
 - Ensure that out of hours provision provided by Adult Mental Health, Children's Social Care and the Police is reviewed in the light of the feedback highlighted in the multi-agency workforce survey
 - Ensure that standards for timeliness of information sharing by all agencies as part of the child protection conference are adhered to, particularly in relation to reports to conference
- To ensure that quality assurance challenges, the Children's Trust Board should ensure that issues identified are taken into account when developing and reviewing services

These challenges are in line with the priorities in this plan and inform their delivery.

We recognise that fulfilling our statutory duty to safeguard and promote the welfare of children and protect them from harm, depends upon effective joint working between agencies and professionals that have different roles and expertise. The ERSCB will drive improvement in this area. Our services will respond to the individual needs of each child, paying particular attention to those who are most vulnerable and at greatest risk.

The ERSCB's vision for fulfilling our commitment to safeguarding and promoting the welfare of all children is that all organisations working with children and young people in the East Riding will have:

- Clear safeguarding priorities explicitly stated in strategic policy documents
- Clear lines of accountability within the organisation for responding to safeguarding issues
- Safe recruitment and human resource management procedures
- Procedures for rapidly dealing with allegations of abuse against members of staff and volunteers

6. Supporting the Most Vulnerable

The East Riding Children's Trust Board is committed to ensuring that all children and young people are safe, able to flourish and maximise their life chances. There are new challenges and developments that lie ahead:

- The Special Educational Needs and Disability (SEND) reforms, to be implemented from September 2014, will inform our future delivery of specialist services and will be captured in the East Riding's SEND Strategy. The SEND reforms include establishing Education, Health and Care (EHC) Plans, re-focusing SEN services and provision up to the age of 25 for those who need it, introducing personal budgets and creating a 'Local Offer' website.
- Children and young people with the most significant needs should have these identified early, and wherever possible, education, health and care needs (for

example short breaks) should be met locally by adopting inclusive principles in our practice.

- Vulnerable young people should be effectively prepared for adulthood and, where needed, supported in their transition to adult services.
- Ensure that vulnerable groups, such as those Looked After, are supported to achieve their potential for learning and attainment.
- Early intervention and prevention services assist in avoiding the need for child protection services.



OUR PRIORITIES

To deliver our ambition, the Children's Trust Board has agreed ten priorities informed by our needs assessments and the voice of children, young people and families. Our priorities address the most significant challenges we face in delivering improvements in all our services in the East Riding. They are all aligned to the core themes that underpin our ambition. This means that our children and young people should:

- **Live in a safe and supportive environment**
- **Benefit from all learning opportunities available to them**
- **Maximise their full potential**
- **Become confident and independent individuals**
- **Have access to the best possible services**
- **Respect and be respected by their peers and adults**
- **Make a positive contribution to their communities**
- **Choose healthy and positive lifestyles**
- **Have access to quality advice and guidance to support their personal development**
- **Be able to influence the development of services provided for them**

To enable this to happen, we will support:

- All schools to become 'Good' or 'Better'
- Families to be free from poverty and its wider determinants
- Families to make good choices
- The regular review of all services for children and young people to ensure that they continue to make a difference to their lives
- The development of centres of excellence for learning and skills
- The provision of good quality independent advice to support the progression to adulthood and independence
- Localities to overcome their geographical challenges and plan effectively for the future

We will also:

- Ensure effective safeguarding for the most vulnerable
- Minimise barriers to learning, especially for those with a vulnerability
- Listen to children and young people and their families and respond to their concerns



CONSULTATION AND ENGAGEMENT

Listening to Children and Young People and Families

In accordance with the Section 10 of the Children Act 1984 'duty to cooperate', local authorities are required to consult with a wide range of stakeholders and partners to ensure that there is agreement about priorities and the ways in which we need to work together to deliver our priorities.

In developing our ambition and priorities for children and young people, therefore, we continue to engage and consult with children, young people and their families. The Children's Trust has developed a tool kit which professionals can use in a range of settings in order to gain an unbiased response and effectively capture the voice of those we seek to support.

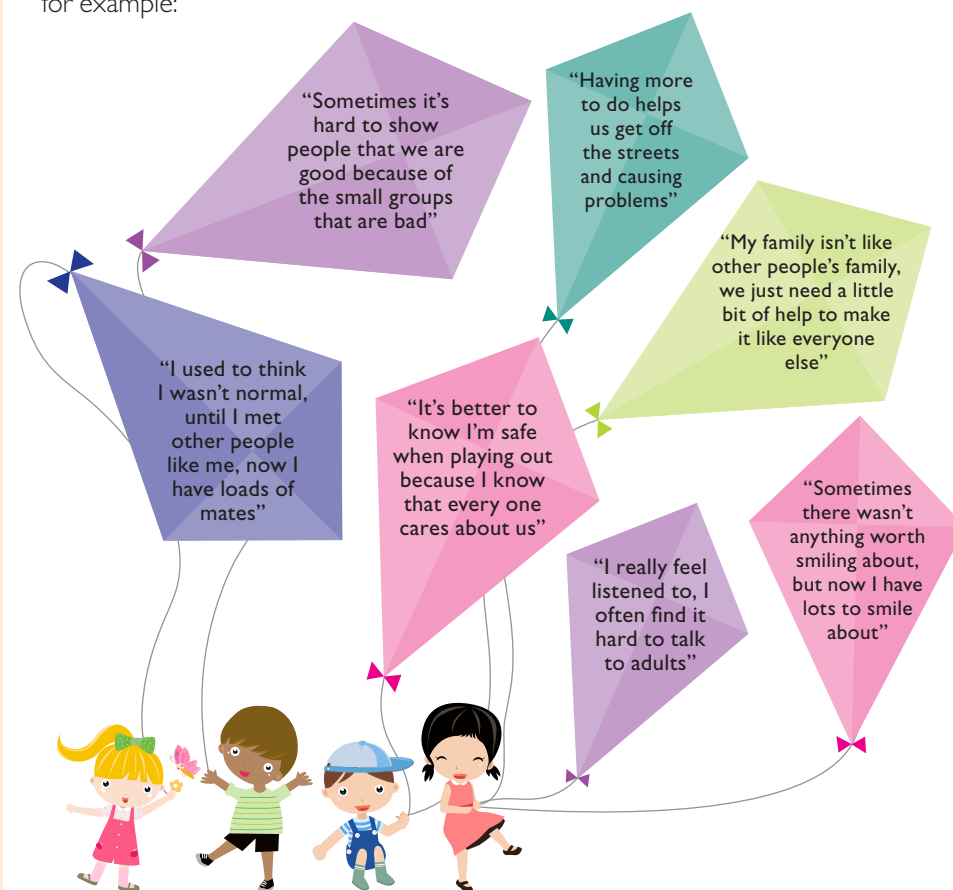
For example, in 2012/13, 487 children and young people were consulted and they including looked after children, young parents and the representatives from the Youth Assembly. Additionally, children, young people and families accessing the Children and Adolescent Mental Health Service were involved in shaping a redesigned service.

Consultation draws on the views of children and young people from across the whole of the East Riding, including those living in rural, urban and coastal areas and is representative of children and young people from seven to eighteen years of age.

The consultations undertaken in 2012/13 focused on a number of key questions:

- Can you identify which services you think are good in your local area?
- Which services in your local area need improving?
- Which services do you think you need?
- Which services do you think your friends or peers need?

Children and young people were also asked about which services made them feel happy, healthy, safe and able to achieve. A wide range of responses were received, for example:



Children and young people were also involved in the evaluation of the engagement and consultation process used will help us to adapt and improve the process in future. Additionally, in the absence of the national ‘Tell Us’ survey, it is intended to undertake a survey in 2014 of Years 7 and 10, covering topics including health, wellbeing and education.

OUR PERFORMANCE FRAMEWORK

The Children's Trust Board recognises that effective performance management and review is critical in delivering a culture of improving outcomes for all children and young people in the East Riding. We have developed a performance management strategy, based on the use of Performance Plus© across the whole of the Local Strategic Partnership, as a tool to identify areas where performance is of concern. A children's services 'dashboard' for performance management is now well established.

In order to monitor progress against our priorities, the Children's Trust Board will regularly monitor progress against the indicators set out below.

Priority Outcome	Link to Key Strategies	Indicator
Live in a safe supporting environment	Anti-Bullying Strategy	Ofstead inspections: Bullying measure - reports/behaviour and safety grades.
	Crime and Disorder Reduction Strategy	Repeat incidents of domestic violence – Multi Agency Risk Assessment Conference (MARAC).
Benefit from all learning opportunities available to them	Improving Schools, Improving Lives	Achievement of 5 or more A*-C grades at GCSE or equivalent including English and Maths.
		Progression measures to support narrowing the gap.
		Schools judged 'good' or 'better'.
Maximise their full potential	Health and Wellbeing Strategy	Number of under 18 conception rates per 1,000 population.
	Youth Justice Strategy	The rate of first time entrants into the Youth Justice System aged 10 – 17.

Become confident and independent individuals	14-19 Education and Training Plan, Strategic Statement for the East Riding and SEND Strategy	16 to 18 year olds who are not in education, employment or training (NEET).
Have access to the best services available	Improving Schools, Improving Lives	Ofsted inspections: Percentage of primary schools judged having serious weakness/ requiring special measure.
		Ofsted inspections: Percentage of secondary schools judged having serious weakness/ requiring special measure.
Respect and be respected by their peers and adults	Crime and Disorder Reduction Strategy	Young people's anti social behaviour - <i>indicator to be determined.</i>
		Annual attitude survey outcomes - <i>data development required.</i>
Make a positive contribution to their communities	Early Intervention Strategy	Proportion of troubled families turned around.
Choose healthy and positive lifestyles	Health and Wellbeing Strategy	Improve children and young people's access to emotional health and wellbeing services. Children and young people have access to psychological therapies and other appropriate service pathways, such as the Youth Support Service.
		Develop the role of schools and children's centres in early intervention.
		Promote breastfeeding and healthy nutrition in early years. Develop a robust whole child approach to tackling unhealthy lifestyles.
Have access to advice and guidance to support their personal development	Early Years Strategy	Families Information Service Hub (FISH) Measure - <i>data development required.</i>

WORKING IN PARTNERSHIP

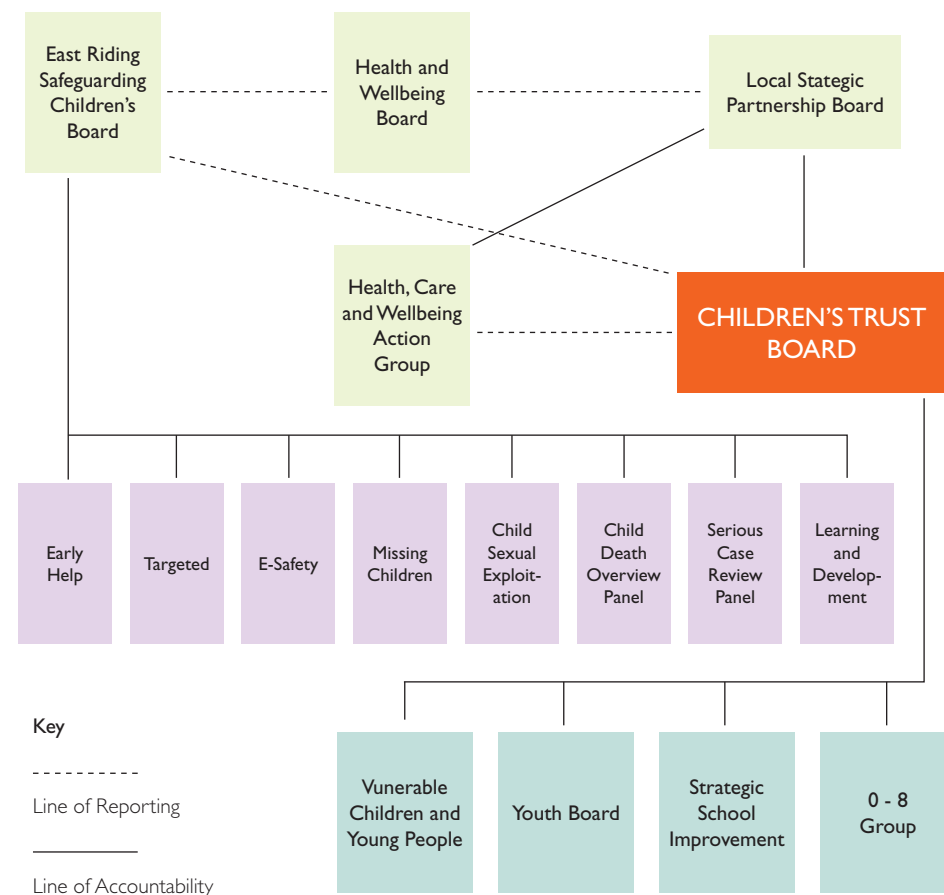
The Children and Young People's Strategic Plan is firmly positioned within the overall ambition for the area contained in the East Riding Community Plan and provides the key driver for those partner organisations working to improve outcomes for children and young people.

We will work together to deliver high quality, effective, value for money services for children and young people. This work is led and overseen by the Children's Trust Board whose primary role is to deliver the Children and Young People Strategic Plan and to ensure that services work in partnership to identify need, and jointly plan to deliver and evaluate these services.

We want children and young people to get the services they need, when and where they want them. To this end, we have developed area based collaboratives which enable more targeted and specialist services to be delivered as locally as possible.

The diagram on the following page illustrates the links and reporting arrangements between organisations, groups and stakeholders involved in delivering improved outcomes for children and young people. It demonstrates the strategic and operational management arrangements for the Children's Trust Board and sets out the main groups that drive delivery of the strategy and which are accountable for monitoring progress across the ten priorities.

East Riding Children's Trust Governance Structure



RESOURCES

The financial climate in which we will deliver our Children and Young People's Strategic Plan is, and will remain, very challenging for all partners. Notwithstanding this, the Council has made clear its commitment to ensuring that an appropriate level of resources are made available to support its children's services and meet its safeguarding obligations.

Council resources for Children and Young People's Services total £255.6m in 2013/14. In addition, the Council has allocated £1.75m to establish the 'Excellence for All' Fund 2013-16, the majority of which will be used to commission additional support to schools seeking to improve from 'requires improvement' or 'struggling' to 'good' under the direction of the management team of the Council's Improvement and Learning Service. Within the fund, there will also be a small 'biddable' pot for innovative projects where 'good' and 'outstanding' schools can work with weaker schools to help them get to 'good'.

The Council has also set aside an earmarked reserve of £3.03m to provide additional support to Children's Services to manage budget pressures and service development.

Additionally, there are currently a number of excellent examples of collaborative and integrated working across the East Riding and many of our services have improved in quality at the same time, despite reductions in resources in some areas. An excellent example is our Family Nurse Partnership programme in Bridlington and Goole. This programme works with vulnerable young women aged 19 years or under, often from disadvantaged backgrounds, who are expecting their first baby, with intensive support provided from 16 weeks of pregnancy until the child is two years old.

In addition to the long term joint strategic objectives set out in the Health and Wellbeing Strategy, the East Riding of Yorkshire CCG has two further objectives:

- To work within our financial allocation to ensure delivery of value for money in all our commissioned services
- To meet our commitment to deliver improving outcomes in line with national and local drivers for change

The CCG will work in partnership with social care, other commissioning partners and providers to ensure delivery of longer term objectives. Within the CCG budget, £25.9m is allocated to Children's Services.

The Humberside Police & Crime Commissioner published the Police & Crime Plan 2013-2017, which sets out priorities for the next four years. The Plan recognises the vital role played by working in partnership in order to deliver the ambition, particularly given the limited resources of the Police, and also recognises the role that the Police can play in improving health and a range of other outcomes for children and young people. Funding has also been provided for specific projects including funding to support the Youth Offending team and in particular, substance misuse and the "positive lifestyles" youth diversion programme.

Humberside Fire & Rescue Services also support the objectives in the plan through a range of initiatives including training, road safety awareness, young driver training via I-car and the Safeguarding team.

In delivering the priorities outlined in this Plan, partners have the following budgets for the period 2013–16.

Children's Plan Budget 2013-2016

	2013/14 £m Approved Budget	2014/15 £m Base Budget	2015/16 £m Base Budget
East Riding of Yorkshire Council: Schools Children's Services	211.09 44.50	210.18 44.08	210.18 41.32
Total	255.59	254.26	251.50
NHS East Riding of Yorkshire CCG Children's Services	25.95	TBD	TBD

Children's Plan Budget 2013-2016: Capital Expenditure

	2013/14 £m Approved Budget	2014/15 £m Base Budget	2015/16 £m Base Budget
Schools Non-Devolved	6.215	5.101	6.741
Schools Devolved	2.888	1.076	0.833
Youth and Family Support	0.180	0.000	0.000
Total	9.283	6.177	7.57

NEXT STEPS

This Strategic Plan comes at a time of continuing challenge. However, we are committed to working together and using our limited resources effectively to deliver our vision whereby children and young people in the East Riding enjoy the best outcomes possible.

All operational and strategic partnership groups that feed into the Children's Trust are reviewing their action plans in line with the priorities identified in this Strategic Plan. The continuous process of Joint Strategic Needs Assessment will inform commissioning and resourcing, resulting in investment continuing to be made (particularly in prevention and early intervention) at a time of financial challenge for the public sector.

The Children's Trust Board will monitor performance and delivery of the action plans that support implementation of this Strategic Plan. Additionally, the East Riding Safeguarding Children Board (ERSCB) deploys strategic, operational and practice challenge in evaluating the effectiveness of all partner agencies responsible for safeguarding children. Where necessary, ERSCB will advise on ways to improve, providing a valuable extra dimension of external support.



APPENDIX I – MAKING A DIFFERENCE

Many positive impacts and outcomes have resulted from the implementation of the Children's Plan 2009-12. Additionally, partners have demonstrated their responsiveness to issues highlighted in inspections of services affecting children and young people by taking appropriate and timely remedial actions. Examples have included:

Looked After Children and Safeguarding Inspection 2011 - Focused improvements made to case recording and decision making processes.

Performance 'Dashboards' - Regular reporting to the Council's Corporate Management Team on delivery of post inspection action plans has been established.

Cycle of Accountability - Performance information managed at team manager level with improvement targets set by senior managers via the Quality and Improvement Board to ensure a cycle of accountability.

Early Help and Advice Team (EHAT) - Now in place, providing a coordinated 'front door' to the Children and Young People Support and Safeguarding Services. This has resulted in a more efficient service through the co-ordinated triage of all contacts leading to a reduction in pressures on safeguarding teams.

Integration of Specialist Services - Education Inclusion Service, Special Educational Needs, Children's Disability, Specialist Commissioning, Education Welfare and Schools Music Service have been brought together, resulting in more coordinated activity focused on vulnerable groups.

Autism Diagnostic Assessments - Long waiting lists for have been eliminated for children under five years of age, and are now being undertaken for over fives.

Re-focusing of Youth Support Services - To become the Youth & Family Support Service, which triages those most in need of support and works with young people on the edge of care and their families.

Sensory Support - Services for hearing and visual impairment and physical disability have been brought into the Council.

Narrowing the gap - Significant progress has been in the past two years on attainment, free school meals and SEN school action+ and stated pupils.

Schools attainment - all significant key stage measures at Foundation stage, key stage 1, key stage 2 (particularly level 2 reading, writing and maths) and GCSE (5 A*-C including English and maths) are above national average.

OfSTED Inspections - There is a steeply improving trend in the number of good or better Primary Schools.

Big Difference - is a theatre in health education production which offers schools a 40 minute play, followed by an interactive workshop to raise awareness of healthy lifestyles. It is aimed at key stage 2 children and complements the national curriculum by promoting the importance of healthy eating and physical activity. Since beginning in 2010, it has toured the East Riding of Yorkshire nine times, delivering 98 performances in primary schools to over 11,000 pupils, staff and parents.

APPENDIX 2 – WHAT THE DATA TELLS US

Data has been collected at a regional level which brings together a range of performance data from national collections, including the Adoption Scorecards, Foundation Stage Benchmarking Tool, and Department for Education statistical returns. This information, which generally covers the period up to the end of March 2013, provides an overview of some of the key issues and comparisons with the fifteen local authorities of the Yorkshire and Humber region, together with some national comparators.

Context

East Riding has the second lowest rate of children living in poverty in the region, and the lowest rates of children with English as an additional language at both primary and secondary school. The rates of children in receipt of free school meals are comparatively low. The level of deprivation in East Riding is low, with only York and North Yorkshire having lower levels of deprivation in the region.

Early Years

Take up of early education is very high in East Riding, with the percentage of 3 and 4 year olds accessing early education being the highest in the region and ninth highest in England. The percentage of early years settings rated good or better by Ofsted is also the highest in the region. The level of children starting school with excess weight is high, with only Hull and North East Lincolnshire having a higher proportion of overweight children in reception class.

Early Help

The rate of Children In Need in the East Riding is, at 311 per 10,000, lower than the average for the region (355 per 10,000), and that for England as a whole (332 per 10,000). The rate of Initial Assessments completed is much lower than elsewhere. In 2012/13, the rate in the East Riding rate was 230 per 10,000, compared to 400 per 10,000 in Yorkshire and the Humber, and 387 per 10,000 in England.

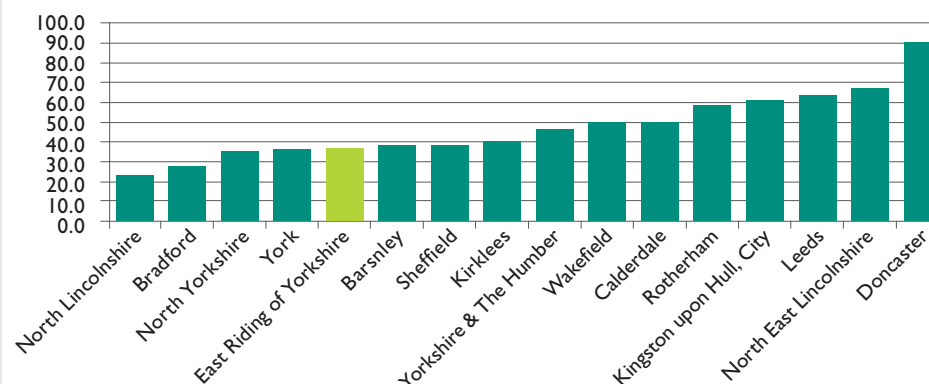
Young People's Education and Employment

Educational outcomes for children in East Riding are generally high compared to others in the region. Outcomes for Key Stage 2 reading progress, writing progress, and reading, writing and maths combined are the highest in the region. At GCSE level, the number achieving 5 or more A*-C is comparatively low at 82.8%, only Barnsley and Sheffield have lower figures. Those achieving 5 or more A*-C including English and Maths is average for the region.

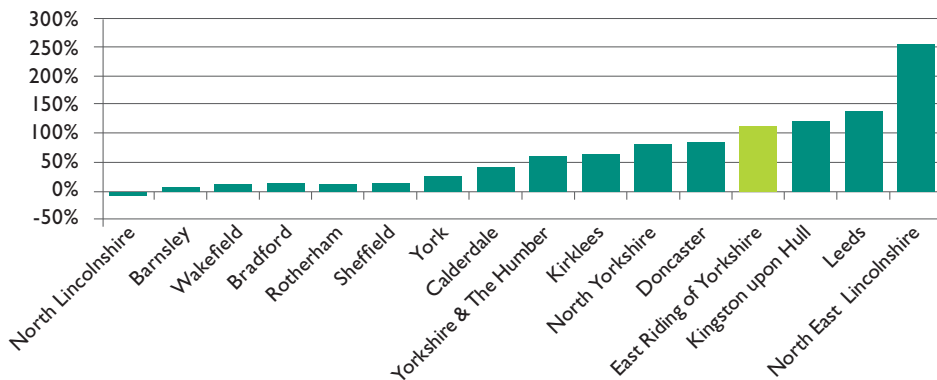
Child Protection Plans

The rate of children subject to a Child Protection Plan in the East Riding is, at 36.7 per 10,000, on par with national data; the rate for England is 37.9 per 10,000. It is, however, much lower than the Yorkshire and Humber rate of 46.7 per 10,000. Bradford, North Lincolnshire, North Yorkshire and York all have lower rates. The rate of children on Child Protection Plans in the East Riding has doubled in the last 3 years, whereas nationally the increase has been only 9%.

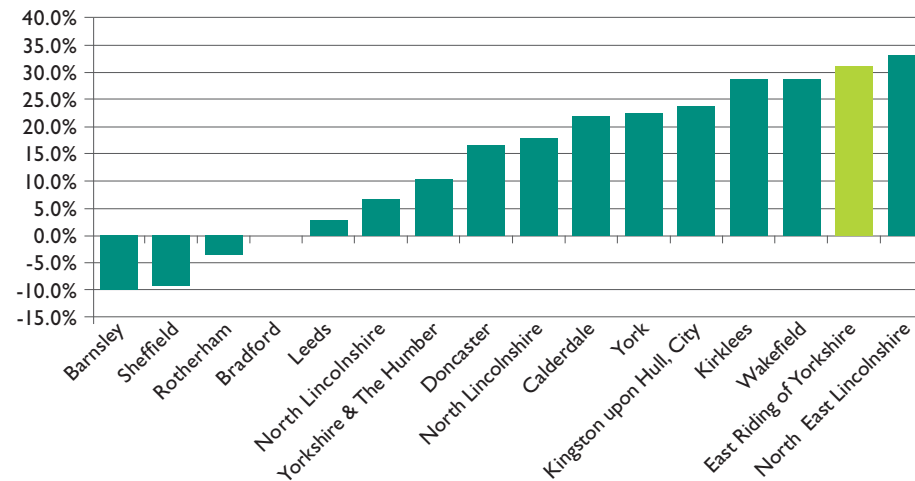
Children on Child Protection Plans, per 10,000 population



Rate of change in the number of children on Child Protection Plan 2009 - 2013



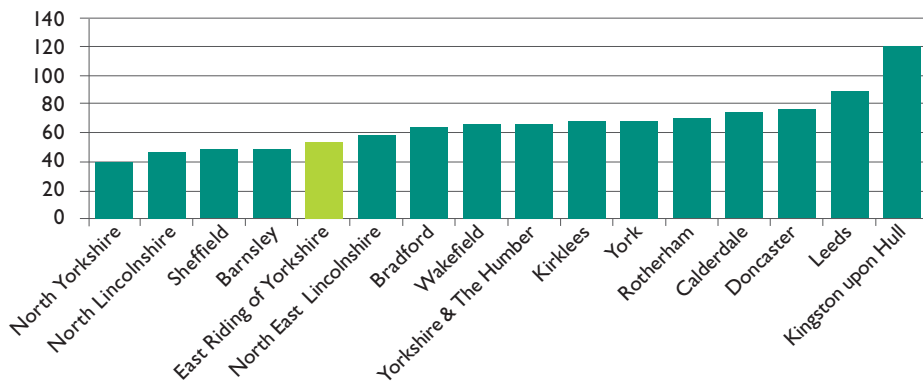
Rate of change in the number of Children Looked After, 2009 - 2013



Looked After Children

Rates of Looked After Children in the East Riding are lower than both the national and regional average at 53 per 10,000. The rate for England is 60 per 10,000 and for the Yorkshire and Humber region it is 66 per 10,000. Barnsley, North Yorkshire, North Lincolnshire and Sheffield all have a lower rate than the East Riding.

Looked After Children per 10,000 population



APPENDIX 3 – GOVERNANCE

The publication, delivery and monitoring of the Children and Young People's Strategic Plan is overseen by the East Riding Children's Trust Board, supported by thematic sub-groups.

East Riding Children's Trust Board

Chair: Kevin Hall, Director of Children, Families and Schools, East Riding of Yorkshire Council

Officer Contact: Carl Duck – carl.duck@eastriding.gov.uk

Purpose - The Board is a partnership of organisations responsible for the delivery of services to children, young people and families. It covers the work of organisations at every level, from the development of the Children and Young People's Plan to the day to day delivery of integrated services. The Board supports and encourages all services whether statutory, voluntary or private to work together in partnership by:

- Setting the vision and strategy
- Ensuring services are delivered to improve outcomes
- Supporting partners to work together
- Producing a Children and Young People's Strategic Plan and reviewing progress

Membership of the Board

The following organisations are represented on the Board:

East Riding of Yorkshire Council	East Riding Secondary Heads
Humberside Probation Trust	Director of Public Health
East Riding Primary Heads	Hull and East Yorkshire Hospitals Trust
Healthwatch East Riding of Yorkshire	Humberside Fire and Rescue Service
Jobcentre Plus	Humber NHS Foundation Trust
North Bank Forum	East Riding of Yorkshire Clinical Commissioning Group
East Riding Voluntary Action Services	

Sub-Groups of the Children's Trust Board

The Children's Trust Board is supported in its work by a number of sub-groups:

Strategic School Improvement Group – This group reviews the performance of schools, reviews Ofsted outcomes and supports the deployment of national, local and specialist leaders in education. The group also brings together two interest groups.

Firstly, the Primary Headteacher Advisory Group, which represents all age related phases within the primary sector and all school geographical clusters. This is a consultative group which is used as a sounding board for Council policy and explores issues relating to both performance and the wider children's agenda and its delivery in primary schools. It is also a forum for the challenge conversation in its broadest terms.

Secondly, the Strategic School Improvement Group also includes the 14-19 Education and Skills Group. This includes representatives from all schools and colleges and its work is based on the strategic and operational issues related to matters such as funding and qualifications that directly impact on young people in the East Riding.

Vulnerable Children and Young People's Group - This group brings together public, private, voluntary and community partners in order to undertake appropriate action that will lead to an improvement in outcomes for vulnerable children and young people. Performance will be judged against key indicators established within the Group's Action Plan. The Group will commission provision in order to secure high quality outcomes and will quality assure this provision as appropriate.

East Riding Youth Board - The group is the multi-agency strategic board responsible for developing, aligning and coordinating all services and partnership activities aimed

at ensuring successful transition to adulthood for young people aged 9-19 in the East Riding. This includes reducing youth crime and anti-social behaviour and improving outcomes for young people with regard to education training and employment. The Board also oversees and ensures access in a consistent manner to services addressing issues which may have a negative outcome for young people, including substance misuse or sexual health, as well as securing positive activities for all young people. The Youth Board is the key mechanism for agreeing how the relevant organisations in the East Riding will co-operate, organise and align services to reduce crime and the fear of crime and promote positive engagement with at risk groups and individual young people in order to maximise positive outcomes for them and their communities. The Youth Board oversees the Supporting Families programme and carries out the statutory functions of a Youth Offending Board in the East Riding.

0-8 Group - The group monitors the delivery of the Early Years and Early Intervention elements of the Children and Young People's Strategic Plan, aligns and coordinates service and partnership activities for children aged 0-8 years and their families in the East Riding. It has an overview of all relevant services through the provision of regular reports and data and provides support and challenge to ensure that public funds are being spent wisely, being directed where they are needed most and are achieving good value for money.

East Riding Children's Safeguarding Board

Chair: Bron Sanders, Independent Chair

Officer Contact: David Radford – david.radford@eastriding.gov.uk

Purpose - To coordinate and ensure the effectiveness of partners to safeguard and promote the welfare of children and young people as outlined in the Children's Act 2004 and Working Together 2013 (the guide to inter-agency working to safeguard and promote the welfare of children).

Membership of the Board

Membership of the Board comprises the following organisations and key individuals:

East Riding of Yorkshire Council:

- Director Children, Families and Schools
- Head of Children and Young People's Support and Safeguarding Services
- Director of Public Health

NHS:

- East Riding of Yorkshire Clinical Commissioning Group
- NHS England
- Northern Lincolnshire and Goole Hospitals NHS Foundation Trust
- Hull and East Yorkshire NHS Hospital Trust
- Humber NHS Foundation Trust
- York Teaching NHS Foundation Trust
- Designated Doctor

Children and Family Court Advisory and Support Service

Humberside Police

Humberside Probation Trust

Primary and Secondary School Representatives

Non-Executive Lay Member

Voluntary and Community Sector

APPENDIX 4 – GLOSSARY OF CHILDREN AND YOUNG PEOPLE STRATEGIES

This glossary identifies the most important plans and strategies that support the delivery of the ambition and priorities within this Plan.

Strategy	Time Frame	Who	Status
'Our East Riding' – the East Riding Community Plan	2006 - 2016	East Riding LSP Board	Current, most recently refreshed in 2013.
Improving Schools, Improving Lives	2013 - 2016	ERYC – Mike Furbank	Current.
14-19 Education and Training Plan and Strategic Statement for the East Riding	2013 - 2014	ERYC – Mike Furbank	Current.
Special Educational Needs Strategy	New	ERYC – Jackie Lown	In development: For approval February 2014.
Early Intervention Strategy	New	ERYC – Pam Allen	In development: For approval February 2014.
Health and Wellbeing Strategy	2013 - 2016	Health & Wellbeing Board	Current.
Children and Young People Joint Commissioning Strategy	2013	ERYC – Jackie Lown	Interim refresh December 2013.

East Riding Young Carer's Strategy and Improvement Plan	2013	ERYC – Pam Allen	In development: For approval March 2014.
Looked After Children's Strategy	2011 - 2016	ERYC – Pam Allen	Current: Refresh to be completed March 2014.
Youth Justice Plan	2013 - 2014	ERYC - Pam Allen	Current.
Primary Strategy for Change – A Strategic Approach to Capital Investment in Primary Schools	2009 - 2024	ERYC – Kristan Livingston	Current.
Strategy for Children, Young People and Adults with Autism	2012 - 2015	ERYCCG – Alex Seale & ERYC – Jackie Lown	Current.
Child Poverty Strategy	2014 - 2017	ERYC – Jackie Lown	In development: For approval February 2014.
Joint East Riding Healthy Weight Strategy	2010 - 2015	ERYC – Andy Kingdom	Current.
Strategy for the Emotional Health and Wellbeing of Children and Young People	2012 - 2015	ERYCCG – Alex Seale	Current.
Anti-bullying Strategy	New	ERYC - Jackie Lown	In development: For approval March 2014.